

General information for visitors to the WPNSA

Where to find us

Take the A354 to Portland. This will bring you to the causeway linking Weymouth to Portland. Half way along the Causeway you will reach a mini-roundabout. Turn left, we are signposted 'sailing academy'

Entry & opening hours

Opening times

9:00-17:00 Monday - Friday

8:00-18:00 Saturday & Sundays

Entry to the site

An access code will be required to enter the site which you can obtain from our reception, or you can call our reception in advance (01305 866000). This will allow you to enter the site to drop boats or campervans off out of our working hours. These codes have valid to and from dates which usually span the weekend, so please remember to gain this code each time you visit.

Car parking

Parking is free and we ask that cars are parked in the designated car parking spaces to the rear of the academy building. We aim to keep our dinghy park, vehicle free for the safety of all pedestrians and to maximize boat space.

Facilities

Classrooms

If you have booked or wish to book a classroom please speak to our receptionist, she will provide you with an access code for entry, and we do have projector equipment available and Televisions in selected rooms. We ask if you leave any valuable equipment in the lecture rooms that you ensure the door is shut behind you.

Launching

We have 150 meters of slipway accessible at all states of wind & tides. The slipways inside the compound are for manual launching. For vehicle launching we have a separate designated slipway, based between WPNSA & Portland Marina. Please ask at reception.

Day membership/weekly

We invite everybody to share our fantastic facilities, you can do this in a number of ways, by taking out a membership in the form of daily, weekly or an annual membership. For further information please ask at reception.

Drying room

After you have been on the water feel free to use our drying room, located opposite the changing rooms this will be left open for your convenience. Please note that any items left in here will be done so at your own risk.

Lockers

Before you head out on the water, feel free to use our lockers to keep all your valuables safe. You can obtain a locker key from reception. You will be required to leave a £10 refundable deposit.

Food & Beverages

Galley opening hours

9:00-17:00 Monday-Friday

8:00-18:00 Saturday & Sundays

These times are subject to bookings, during events and training if instructed the cafeteria can be open later for evening meals. We also have an onsite bar which again can be opened during the busy times of events and functions. Times will be subject to booking details.

Training

If you are a coach visiting our facilities for training we would ask that you come to reception to fill in a risk assessment on each day of your training and collect information regarding movements on the local waters.

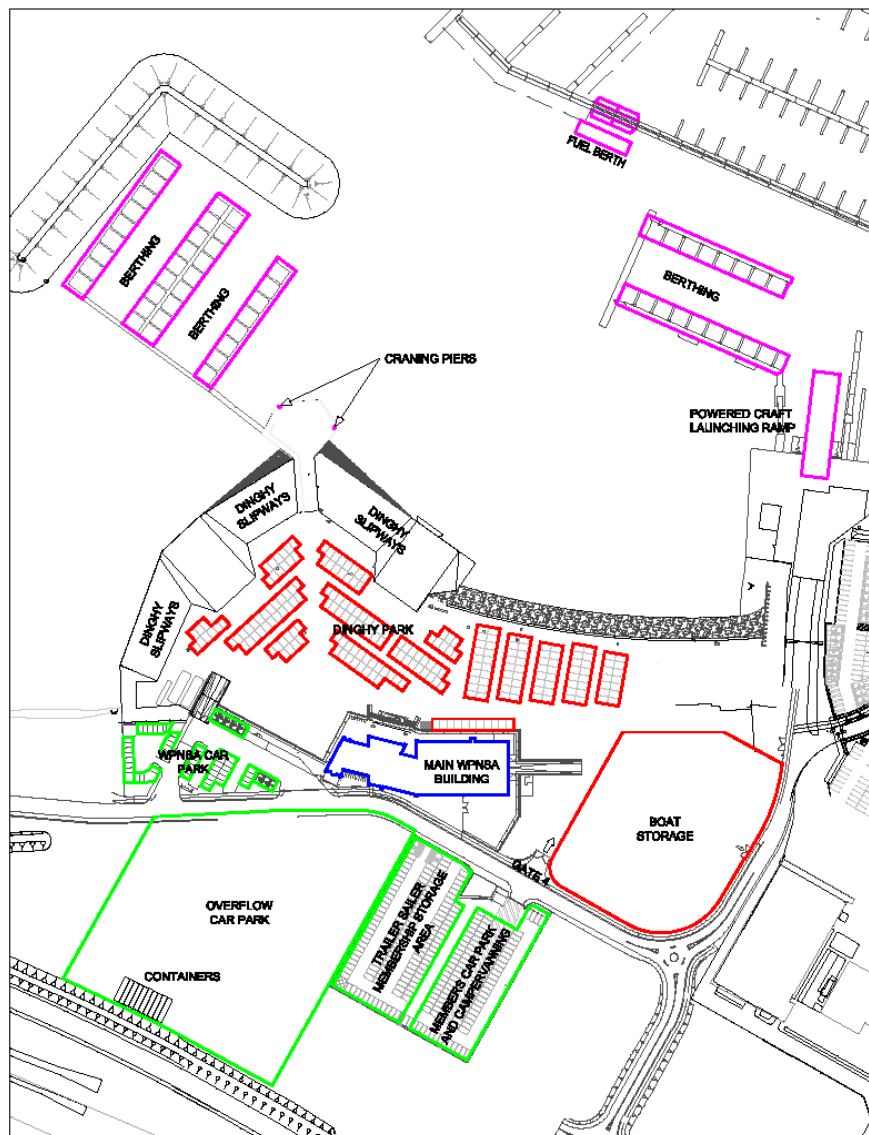
Local area

Chandlery

Over in the marina a short walk from the academy you will find Bussells our local chandlery open all year round Contact 01305785633 for more info. Or email info@bussells.co.uk

Things to do

The WPNSA is lucky enough to be in the heart of the famous Jurassic coast, England's first natural world heritage site. This means there are fantastic walks and biking available from our door step or if you would rather you can visit the classic sea side resort of Weymouth, with its beach and idyllic leisure harbour which nestles perfectly alongside the rugged "Isle" of Portland, here you will find numerous shops and restaurants along with many activities run throughout the summer months. For more information please ask at our reception were you will find a number of leaflets on things to do in the area.



WPNSA SITE PLAN 2010