

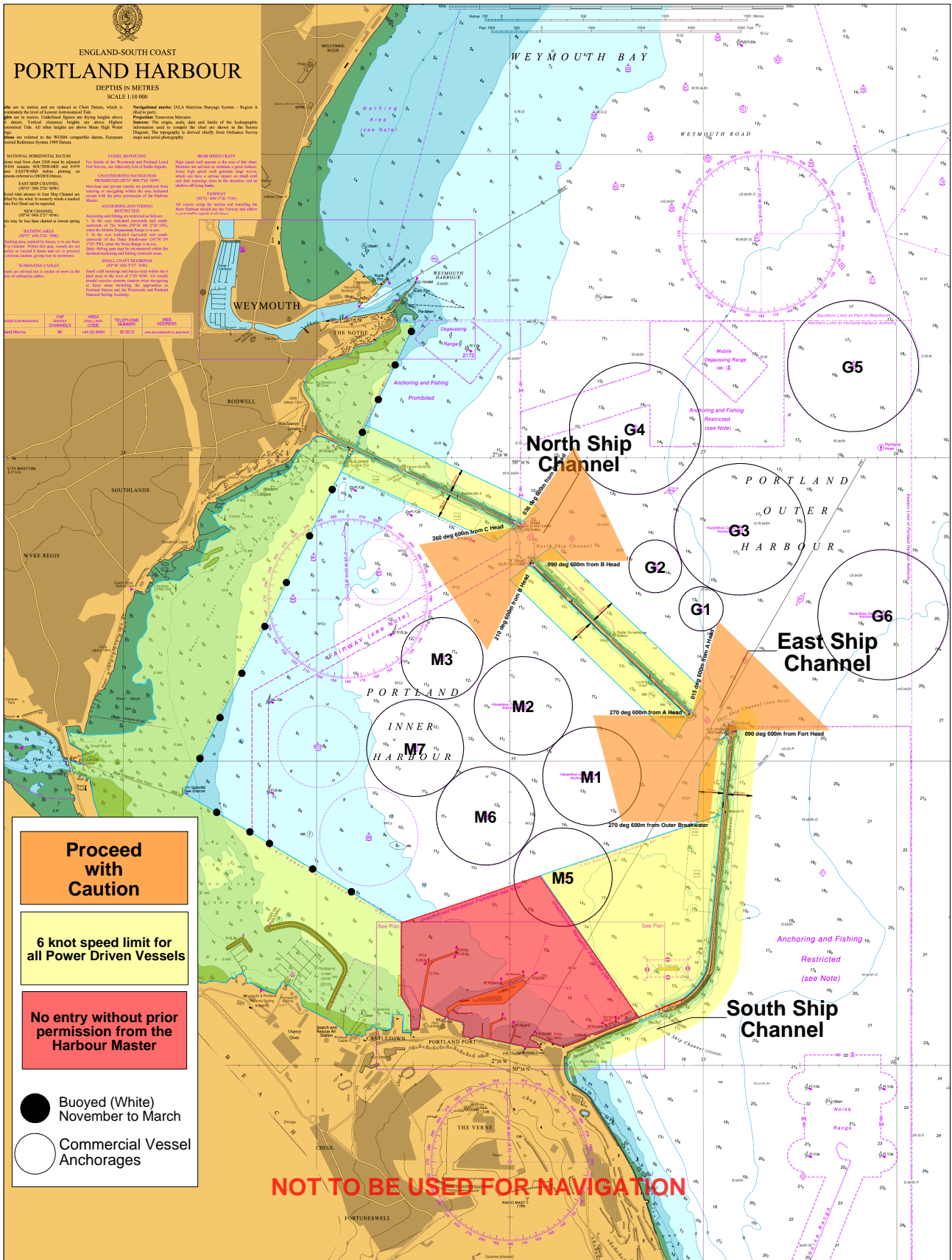


PORTLAND HARBOUR AUTHORITY

Portland Harbour Speed Limits and Restricted Area's



PORTLAND HARBOUR AUTHORITY



Reproduced from Admiralty Chart BA2268 by permission of the controller of Her Majesty's Stationary Office and UK Hydrographic Office (www.ukho.gov.uk)

This is an interpretation of the Portland Harbour Revision Order 1997. The Portland Harbour Revision Order 1997 will take precedence in all cases.

Portland Harbour Revision Order 1997 Schedule 1, Paragraphs 1, 6, and 7.

Version 1 March 2014